

DIANA 09

2 BED | 2.5 BATH

RESIDENCE:	1,979 SF
VESTIBULE:	63 SF
BALCONY:	338 SF
TOTAL:	2,380 SF

SCALE: 1/4" = 1'-0"

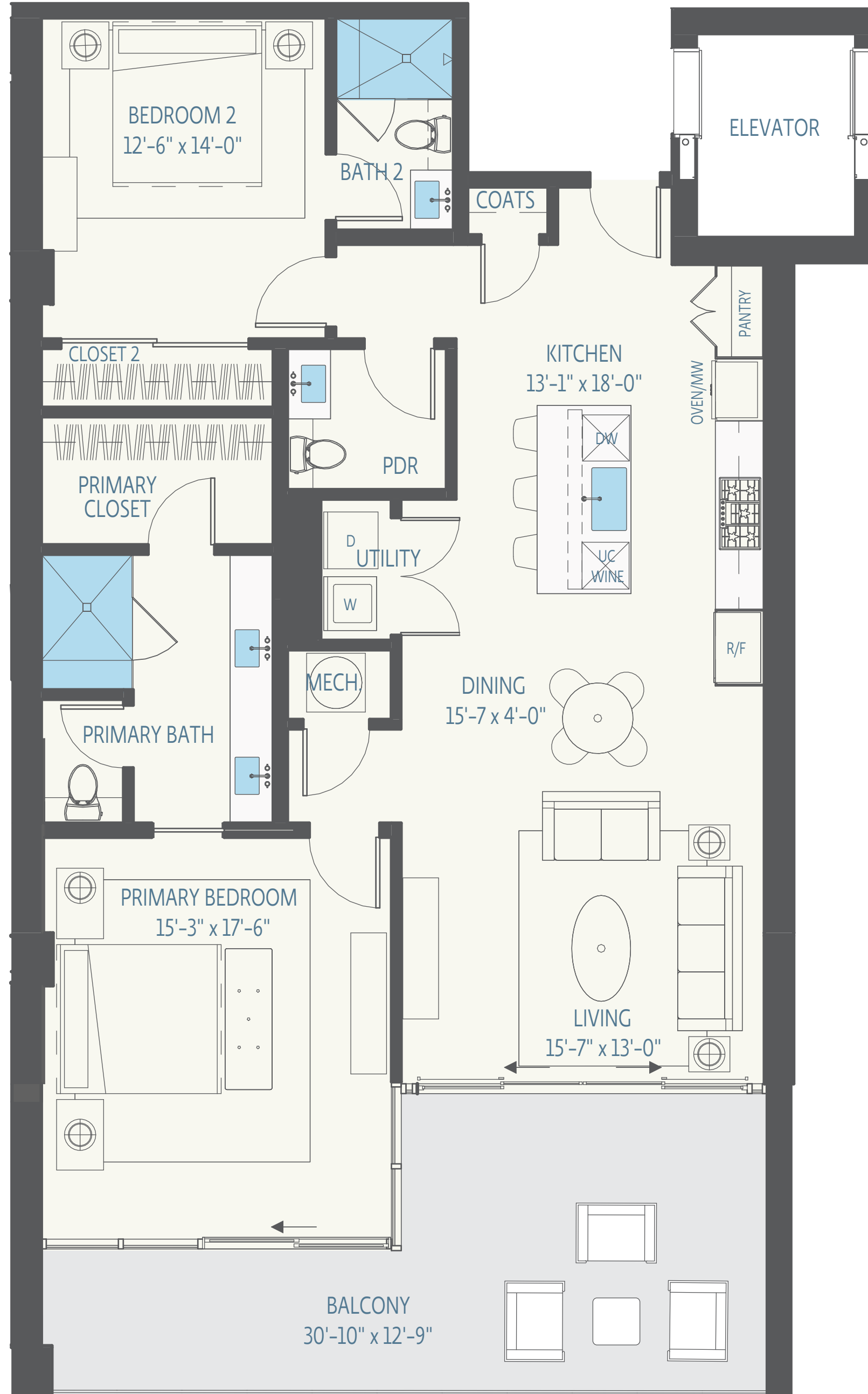
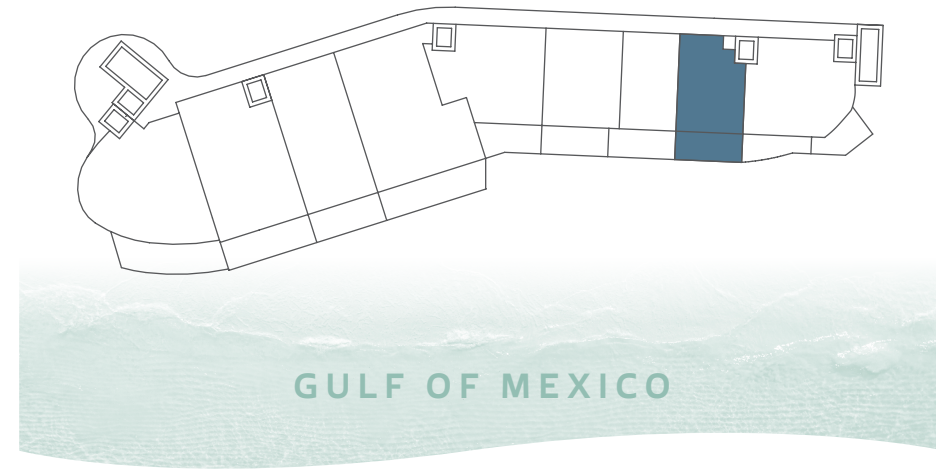
Developed by:
SATYA

Exclusive Sales and
Marketing by:
NAN
PROPERTIES
DEVELOPER SERVICES

Designed by:
PLACE



This floor plan is conceptual for marketing purposes as a guide only, is subject to change, and may include optional features. Any furnishings shown or depicted are not included. Generally, the percentage ownership attributable to the units is based upon the total square feet of the indoor and outdoor living areas of each unit, which may include the balcony. All content (including information about square footage, features, fixtures, fittings, finishes, and specifications) provided are conceptual based on preliminary development plans; developers reserve the right to make modifications and changes to the project, in whole and in part, and to the information contained herein. Dimensions including square footage and specifications are approximate, subject to change without notice, and subject to normal construction variances and tolerances. Please refer to the Condominium Information Statement and the proposed condominium documents included with same for further information and disclosures with regard to methodology of square feet calculations, percentage ownership allocations, and the like. The construction of the proposed improvements are subject to modifications which may be required by applicable city or governmental permitting requirements.



BEATRICE 08

2 BED | 2.5 BATH

RESIDENCE: 1,477 SF
 BALCONY: 303 SF
 TOTAL: 1,780 SF

SCALE: 1/4" = 1'-0"

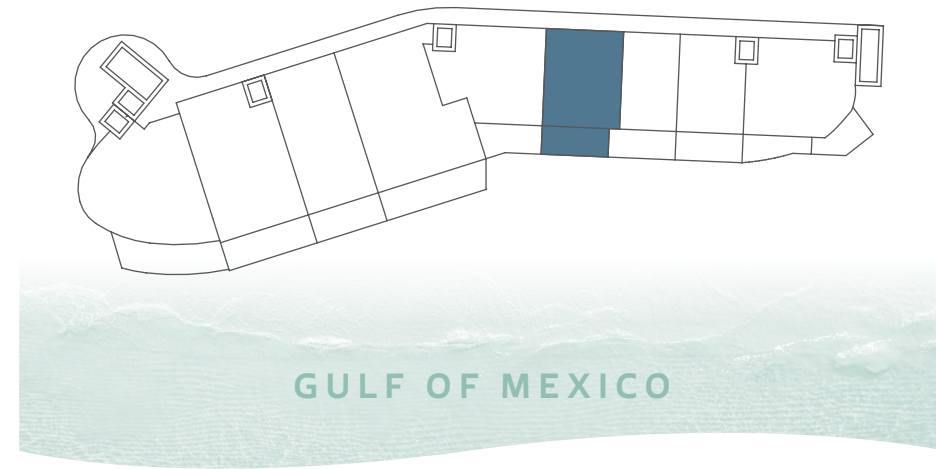
Developed by:

Exclusive Sales and
 Marketing by:

Designed by:



This floor plan is conceptual for marketing purposes as a guide only, is subject to change, and may include optional features. Any furnishings shown or depicted are not included. Generally, the percentage ownership attributable to the units is based upon the total square feet of the indoor and outdoor living areas of each unit, which may include the balcony. All content (including information about square footage, features, fixtures, fittings, finishes, and specifications) provided are conceptual based on preliminary development plans; developers reserve the right to make modifications and changes to the project, in whole and in part, and to the information contained herein. Dimensions including square footage and specifications are approximate, subject to change without notice, and subject to normal construction variances and tolerances. Please refer to the Condominium Information Statement and the proposed condominium documents included with same for further information and disclosures with regard to methodology of square feet calculations, percentage ownership allocations, and the like. The construction of the proposed improvements are subject to modifications which may be required by applicable city or governmental permitting requirements.



CHARLOTTE 06

2 BED | 2.5 BATH

RESIDENCE: 1,809 SF
 BALCONY: 306 SF
 TOTAL: 2,115 SF

SCALE: 1/4" = 1'-0"

Developed by: **SATYA**
 Exclusive Sales and Marketing by: **NAN** PROPERTIES DEVELOPER SERVICES
 Designed by: **PLACE**

This floor plan is conceptual for marketing purposes as a guide only, is subject to change, and may include optional features. Any furnishings shown or depicted are not included. Generally, the percentage ownership attributable to the units is based upon the total square feet of the indoor and outdoor living areas of each unit, which may include the balcony. All content (including information about square footage, features, fixtures, fittings, finishes, and specifications) provided are conceptual based on preliminary development plans; developers reserve the right to make modifications and changes to the project, in whole and in part, and to the information contained herein. Dimensions including square footage and specifications are approximate, subject to change without notice, and subject to normal construction variances and tolerances. Please refer to the Condominium Information Statement and the proposed condominium documents included with same for further information and disclosures with regard to methodology of square feet calculations, percentage ownership allocations, and the like. The construction of the proposed improvements are subject to modifications which may be required by applicable city or governmental permitting requirements.